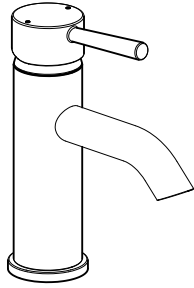


## INSTALLATION INSTRUCTIONS



### Tools:

- Adjustable Wrench
- Pliers
- Pipe Wrench
- Screwdriver
- Teflon Tape
- 1 3/8" Basin Wrench or
- 1 11/32" Shower Valve Socket
- Wrench

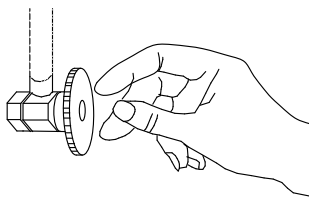


### Maintenance:

Your new lavatory faucet is designed for years of trouble-free performance. Keep it looking new by cleaning it periodically with a soft cloth. Avoid abrasive cleaners, steel wool and harsh chemicals as these will dull the finish and void your warranty.

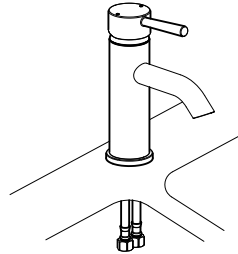
### Single Handle Modern Lavatory Faucet With 50/50 Pop-up

1



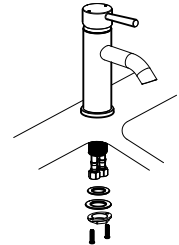
Shut off water supplies. Remove old faucet. Clean sink surface in preparation for new faucet.

2



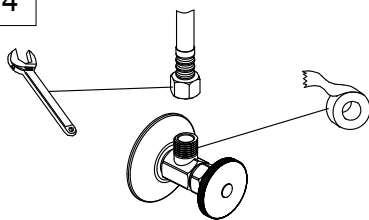
Place optional Flange on bottom of new faucet before position faucet through mounting hole.

3



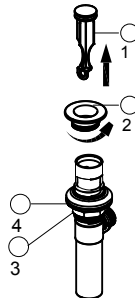
Remove the two screws from locking nut. Under the sink install the rubber washer, steel washer, and locking nut onto the shank. Tighten the locking nut with a basin wrench or socket tool and install the two screws to secure the faucet in place.

4



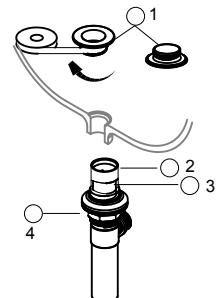
Apply pipe tape onto threads of water supplies. Use wrench when tightening the hose connection, **do not over tighten.**

5



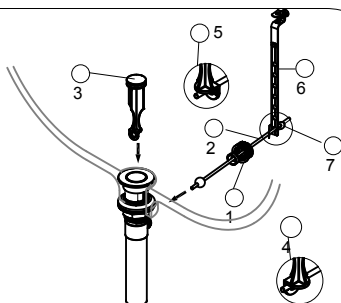
Remove stopper (1) and flange (2). Screw nut (3) all the way down. Push gasket (4) down.

6



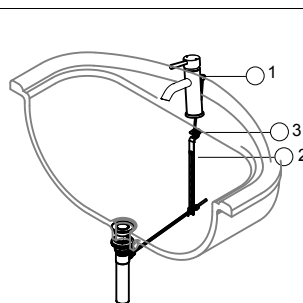
Apply plumber's putty to the underside of flange (1). Apply teflon tape to threads at the bottom of flange (1). Insert body (2) into sink. Screw flange onto body. Pivot hole (3) must face the back of the sink. Tighten nut/gasket (4), **do not over tighten.** Clean excess putty.

7



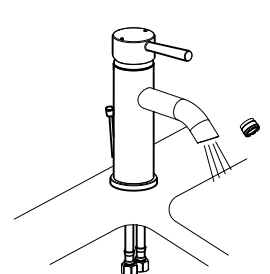
Remove pivot nut (1). Insert the stopper (3) into the drain hole and Insert horizontal rod (2) through the hole of the stopper (3) according to graphic (5). Hand tighten pivot nut (1). Attach horizontal rod to strap (6) using clip (7).  
NOTE: For easier removal and cleaning, rotate the stopper (3) 90° so that the horizontal rod (2) does not go through the hole in the stopper (3), see graphic (4).

8



Insert lift rod (1) through faucet and into strap (2). Tighten screw (3).

9



After installation is completed, turn on water supply and allow both hot and cold water to run for one minute each. While water is running, check for leaks. Reinstall aerator. Your new faucet is ready to use.

## Exploded Drawing RP (Replacement Parts)

MODEL: S331HMLV-CH  
S331HMLV-BN  
S331HMLV-MB

