

Single Handle Moder Kitchen Faucet  
with Pull-Down Spray

## INSTALLATION INSTRUCTIONS

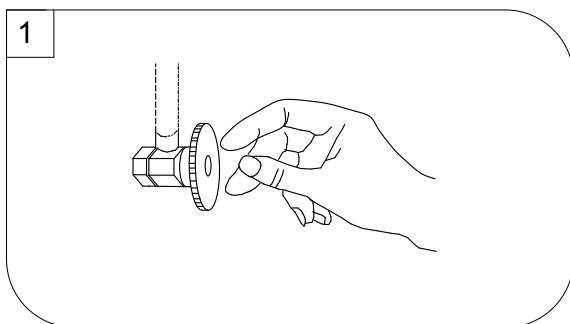
### Tools:

- Adjustable Wrench
- Pliers
- Pipe Wrench
- Screwdriver
- Teflon Tape
- 1 3/8" Basin Wrench or
- 1 11/32" Shower Valve Socket
- Wrench

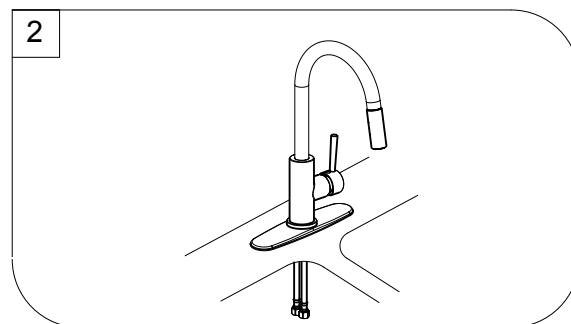


### Maintenance:

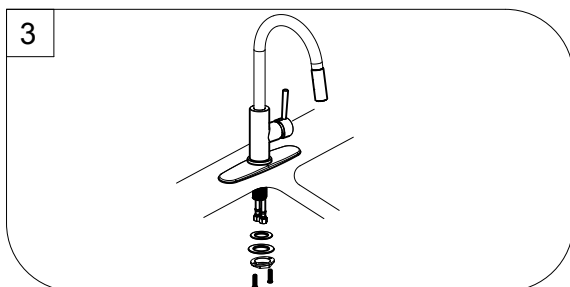
Your new kitchen faucet is designed for years of trouble-free performance. Keep it looking new by cleaning it periodically with a soft cloth. Avoid abrasive cleaners, steel wool and harsh chemicals as these will dull the finish and void your warranty.



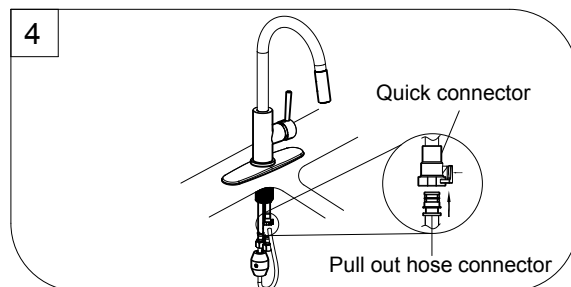
Shut off water supplies. Remove old faucet. Clean sink surface in preparation for new faucet.



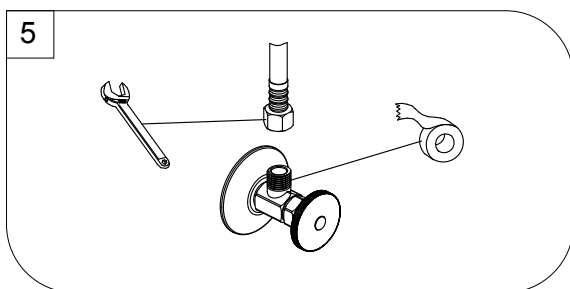
Place optional flange and escutcheon on bottom of new faucet before position faucet through mounting hole.



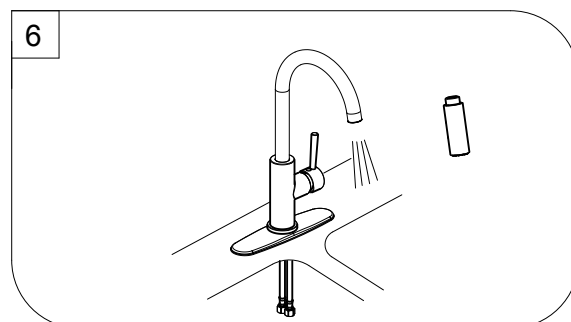
Remove the two screws from locking nut. From under the sink, install the rubber washer, steel washer, and locking nut onto the shank. Tighten the locking nut with a basin wrench or socket tool and install the two screws to secure the faucet in place.



Install counter weight onto pull out hose. Then connect the pull out hose and the outlet hose at the same time press the button of quick connector.



Apply pipe tape onto threads of water supplies. Use wrench when tightening the hose connection, **do not overtighten**.



Important: After installation is completed. Turn on water supply and allow both hot and cold water to run for one minute each. While water is running, check for leaks. Reinstall spray head. Your new faucet is now ready to use.