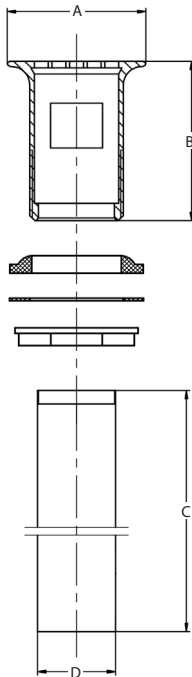




**S33-EFBRPO-1706 .3403168**

DESCRIPTION	DIMENSIONS (in)			
	A	B	C	D
1-1/4" x 6"	2.23	2.57	6	1.25



### SUBMITTAL SHEET

#### PROJECT INFORMATION

Job Name:

Location:

Engineer:

Contractor:

P.O. Number:

Representative:

#### MODELS

□ S33-EFBRPO-1706

#### DESCRIPTION

Stream33® Brass Patent Overflow Grid Drain is used in tubular drain applications. The brass construction ensures durability and reliability.

#### FEATURES

- Durable 17-gauge brass construction
- Chrome-plated
- 6" tailpiece
- Patent overflow plug

#### APPROVALS

- cUPC

#### MATERIAL SPECIFICATIONS

<b>Body</b>	Brass
<b>Gasket</b>	Rubber
<b>Washer</b>	Fiber
<b>Nut</b>	Brass