



S33-EFBRPT-1714CO .3403155

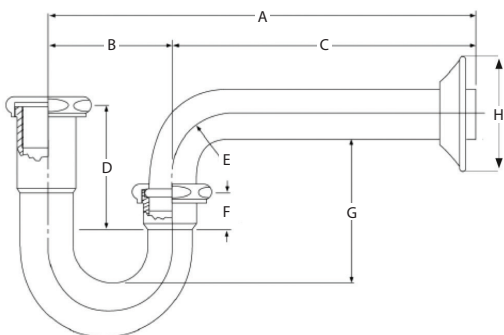
DESCRIPTION	DIMENSIONS (in)							
	A	B	C	D	E	F	G	H
1-1/4" x 1-1/4"	9.95	2.95	7	2.11	0.63	0.41	2.99	2.95

S33-EFBRPT-1412CO .3403156

DESCRIPTION	DIMENSIONS (in)							
	A	B	C	D	E	F	G	H
1-1/2" x 1-1/4"	10.85	3.35	7.5	2.11	0.75	0.41	2.99	2.8

S33-EFBRPT-1712CO .3403157

DESCRIPTION	DIMENSIONS (in)							
	A	B	C	D	E	F	G	H
1-1/2" x 1-1/2"	10.85	3.35	7.5	2.11	0.75	0.41	2.99	2.8



SUBMITTAL SHEET

PROJECT INFORMATION

Job Name:

Location:

Engineer:

Contractor:

P.O. Number:

Representative:

MODELS

☐ S33-EFBRPT-1714CO

☐ S33-EFBRPT-1712CO

☐ S33-EFBRPT-1412CO

DESCRIPTION

Stream33® Brass Tubular P-Trap less Cleanout is used to connect into a wall-connected sink drain system in tubular applications. The solid brass construction ensures durability and reliability.

FEATURES

- Durable 17-gauge brass construction
- Chrome-plated
- Escutcheon included

APPROVALS

- cUPC