

S33A2-6042CTS2

60 in x 42 in x 79 in (1525 mm x 1070 mm x 2010 mm)



FEATURES

- Durable high gloss finish
- Smooth wall, 4 piece molded sectionals
- Pre-leveled base
- Caulkless installation
- Leakproof right angle joint flanges
- Easy wedge & lock installation
- Multiple integral soap shelves
- Left, right drain
- Slip-resistant, textured bottom
- Available in White
- 15-Year residential limited warranty

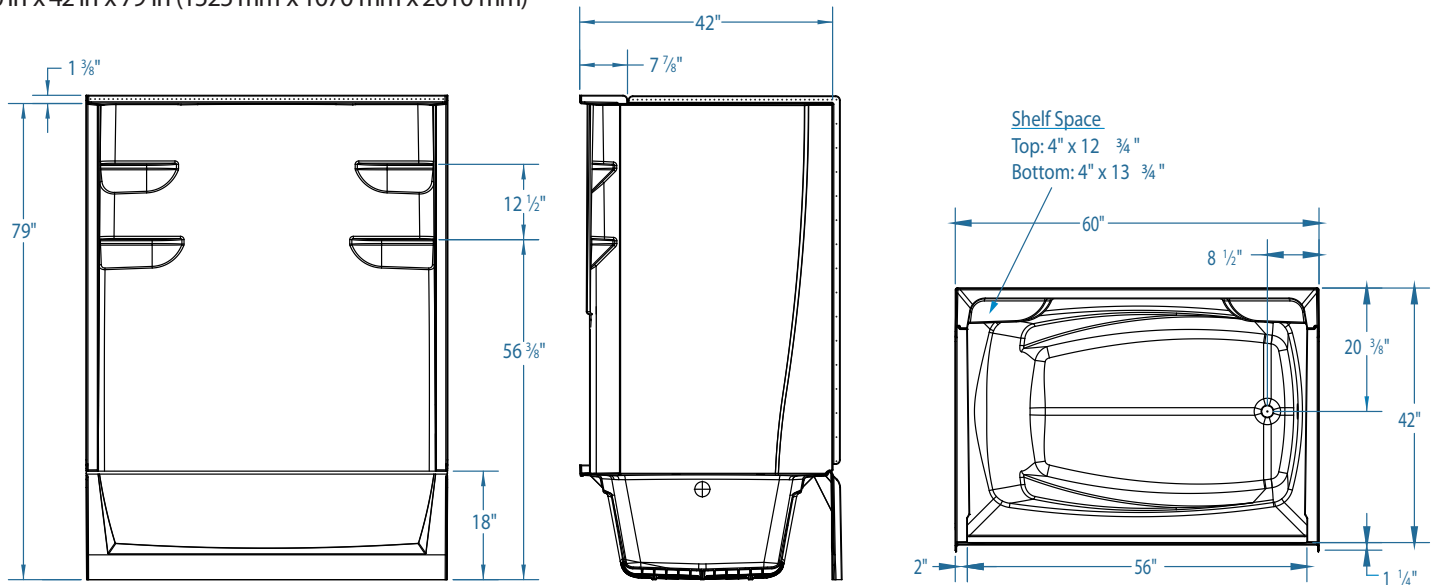


What is A² Composite?

Lightweight and durable, our A² Composite is an engineered compound of resin, glass and special fillers formed into sheets. These sheets are then placed under high pressure and heat to liquefy the compound, allowing it to flow and take the shape of almost any form imaginable. The results are simple, stylish and a snap to install.

S33A2-6042CTS2

60 in x 42 in x 79 in (1525 mm x 1070 mm x 2010 mm)



FEATURES

Dimensional Tolerance $\pm \frac{3}{16}$ ". Dimensions needed for site preparation should be measured from the unit. Stream33 assumes no responsibility for preparatory work.

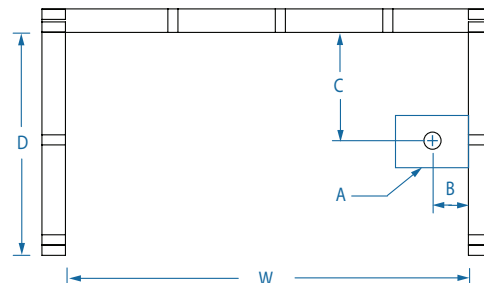
| Model # | Material | Jets | Motor | Controls | Drain | Net Wt. | Pkg. Wt. |
|---------------|-----------|------|-------|----------|---------------|-----------------|-----------------|
| S33A2-6042CTS | Composite | – | – | – | Left or Right | 138 lbs (63 kg) | 146 lbs (66 kg) |

DIMENSIONS

| Specifications | |
|---------------------------------|--|
| Width: Overall / Net | 60 in (1525 mm) |
| Depth: Overall / Net | 43 1/4 in (1100 mm) / 42 in (1070 mm) |
| Height: Overall / Net | 80 3/8 in (2040 mm) / 79 in (2010 mm) |
| Enclosure Opening | 56 in (1420 mm) |
| Skirt Height | 18 in (460 mm) |
| Drain Rough-In (from Back Wall) | 20 3/8 in (520 mm) |
| Drain Rough-In (from Side Wall) | 2 in (50 mm) |
| Drain: Diameter / Clearance | 2 in (50 mm) / 1/2 in (15 mm) |

FRAMING DIMENSIONS

| Type | D Depth | W Width | H Height | A | B | C |
|--------|------------------------|--------------------|------------------------|---------|--------------|--------------------|
| Alcove | 43 1/4 in (1100 mm) | 60 in (1525 mm) | 80 3/8 in (2040 mm) | Box Out | 2 in (50 mm) | 20 3/8 in (520 mm) |



SUMP DATA

| Top of Drain to Bottom of Overflow | Capacity to Overflow | WIDTH @ Centerline | | DEPTH @ Centerline | |
|---------------------------------------|-------------------------|---------------------|---------------------|--------------------|--------------------|
| | | Top | Bottom | Top | Bottom |
| 12 5/8 in (320 mm) | 65 gal in (245 ltr) | 51 3/8 in (1310 mm) | 43 1/2 in (1105 mm) | 33 3/8 in (855 mm) | 26 3/4 in (680 mm) |