

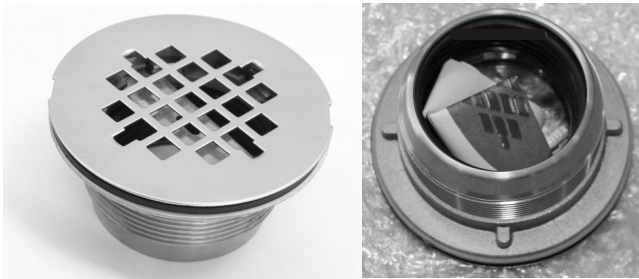


## Instructions for Installing 2" No Caulk Shower Drain

You will need: shower drain, silicone, and a screwdriver.

### Step 1

Unwrap your new shower drain – but leave the plastic protective film cover on the strainer to protect it from scratches during installation.



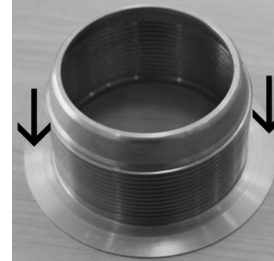
### Step 2

Identify the different parts of your new shower drain. Pop the strainer off the drain body. Remove the compression gasket from inside the drain body and unscrew the inside compression nut. Unscrew the locking nut from outside the drain body.



### Step 3

Turn drain body over and apply silicone around the edge of the drain body.



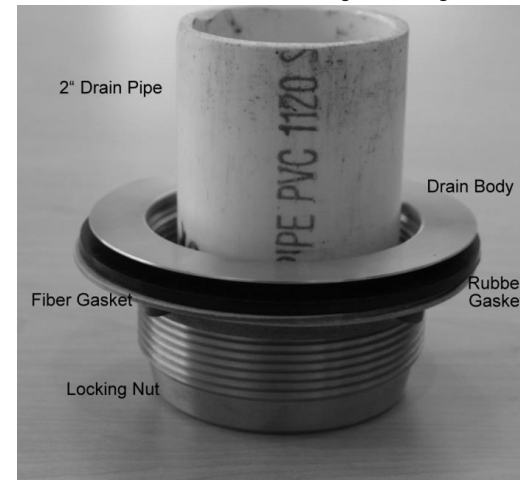
### Step 4

Place fiber gasket over the locking nut. Then place rubber gasket on top of the fiber gasket.



### Step 5

Screw drain body into the locking nut/fiber gasket/rubber gasket. The silicone coated side should "sandwich" with the locking nut and gaskets. Then place over the 2" drain pipe opening.



#### Step 6

Place compression gasket – tapered side UP – between the drain pipe and the drain body. You may need to use the screwdriver to push the gasket down.



#### Step 7

Screw the inside compression nut into the drain body making sure the beveled edge (tabs) are facing up and is flush with the pipe surface.



#### Step 8

Place the tightening tool between the bevels (or tabs) on the inside compression nut. You may want to stuff a rag or sock into the pipe prior to placing the tightening tool. This will prevent the tool from falling into the pipe if it slips off the drain.



#### Step 9

Using a screwdriver for leverage, tighten the inside compression nut clockwise as tightly as possible. Remove the tightening tool from the drain, and rag or sock if you have used one.



#### Step 10

Place the strainer over the drain body and push down to click it into place. Remove the plastic film protective cover. Enjoy!