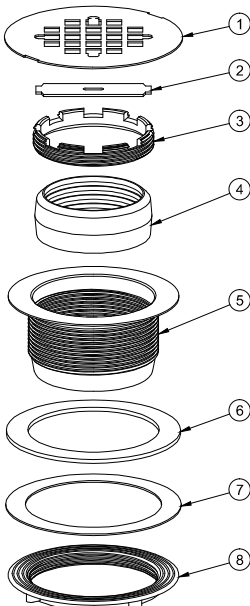
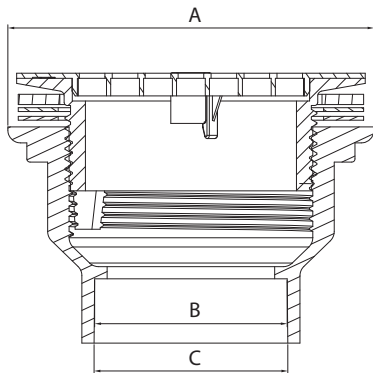




S33-BSD2 .3466678

DESCRIPTION	DIMENSIONS (in)		
	A	B	C
2" BRASS SHOWER DRAIN	4.51	2.37	2.39



## SUBMITTAL SHEET

### PROJECT INFORMATION

Job Name:

Location:

Engineer:

Contractor:

P.O. Number:

Representative:

### MODELS

☐ S33-BSD2

### DESCRIPTION

Stream33® Brass No-Caulk Shower Drains are designed for use with shower stall bases. The drain body is sealed to the shower base with a fiber and rubber washer that does not require caulking.

### FEATURES

- No Caulk
- Stainless Steel Strainer

### APPROVALS

- cUPC

### MATERIAL SPECIFICATIONS

1	Strainer	Stainless Steel
2	Wrench Key	Steel
3	Locknut	Brass
4	Gasket	Rubber
5	Main Body	Brass
6	Gasket	Rubber
7	Gasket	Duplex Paper
8	Locknut	Brass