



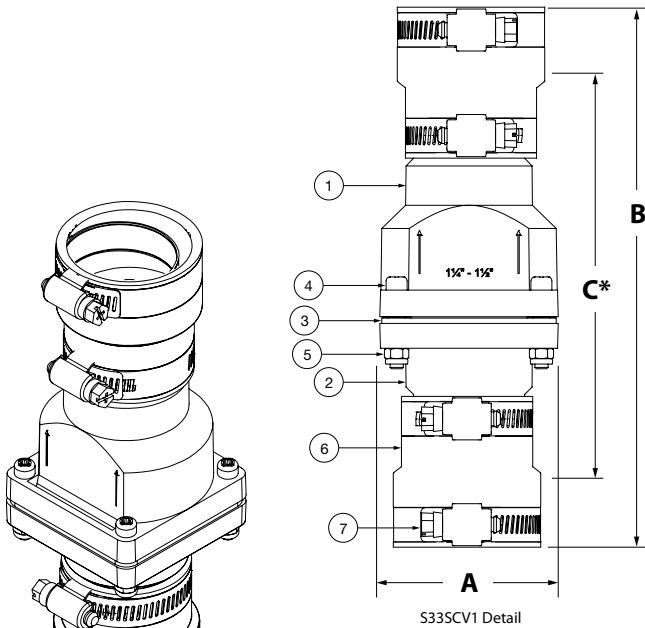
S33SCV1



S33SCV2

Model	ID	Size	A	B	C*
S33SCV1	.3551380	1-1/4" ⁽¹⁾	2.68"	6.63"	5"
		1-1/2" ⁽¹⁾	2.68"	8"	6"
S33SCV2	.3551381	2"	3.72"	10.63"	7.5"

⁽¹⁾ Same item with different boot direction.
* Minimum distance between pipes.



S33SCV1 ISO View

SUBMITTAL SHEET

Project Information

Job Name:

Location:

Engineer:

Contractor:

P.O. Number:

Representative:

FEATURES

- Reversible end adapters allow for installation on 1-1/4" or 1-1/2" pipe (smaller size only)
- Can be installed in either vertical (upward flow) or horizontal (flapper hanging) positions
- Designed for low pressure sump pump discharge systems
- Not suitable for compressed air or steam service
- Manufactured in an ISO accredited facility
- Working pressure, non shock (PSI):
 - Maximum back pressure: 10 feet of head
 - Maximum service temperature: 130°F

MATERIAL SPECIFICATIONS

1. Upper Body Segment	Impact Grade ABS
2. Flapper	Commercial Grade EPDM Rubber & Stainless Weight
3. Lower Body Segment	Impact Grade ABS
4. Screw (4)	AISI 300 Stainless Steel
5. Nut (4)	AISI 300 Stainless Steel
6. End Adapter (2)	ASTM C1173 Flexible PVC
7. Clamp (4)	AISI 300 SS Band & Screw