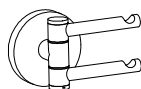




Robe Hook

S33HRH-CH  
S33HRH-BN  
S33HRH-MB



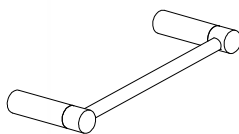
Double robe hook

S33HDRH-CH  
S33HDRH-BN  
S33HDRH-MB



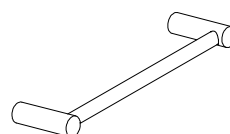
Towel Ring

S33HTR-CH  
S33HTR-BN  
S33HTR-MB



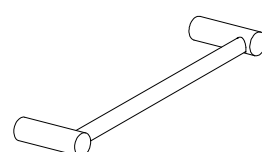
Paper Holder

S33HPH-CH  
S33HPH-BN  
S33HPH-MB



18 Towel Bar

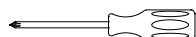
S33H18TB-CH  
S33H18TB-BN  
S33H18TB-MB



24 Towel Bar

S33H24TB-CH  
S33H24TB-BN  
S33H24TB-MB

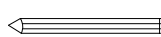
### TOOLS REQUIRED



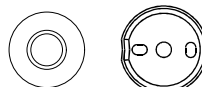
Phillips screwdriver



Hexagon allen wrench



Marking pencil



Mounting bracket



Plastic screw



Mounting screw

### MOUNTING INSTRUCTION STEPS

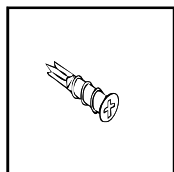


FIGURE 1

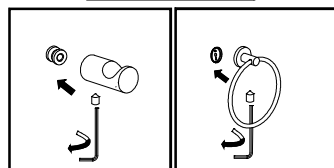


FIGURE 2

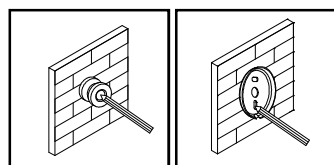


FIGURE 3

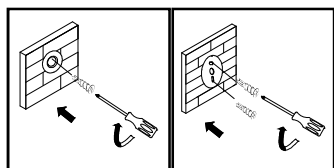


FIGURE 4

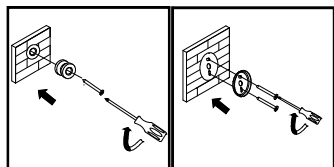


FIGURE 5

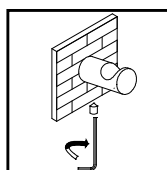


FIGURE 6

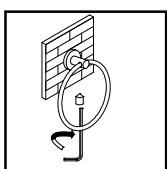


FIGURE 7

**STEP 1: PLEASE READ BEFORE BEGINNING YOUR INSTALLATION – DETERMINE INSTALLATION METHOD.**

The three most common installation methods are indicated below:

#### 1. METHOD #1 – DRYWALL

Using the plastic screw provided and pictured in Figure 1 determine mounting locations and screw into the wall using a Phillips screwdriver until flush with the wall.

#### 2. METHOD #2 – MOUNTING TO A WOODEN STUD

Upon determining that you will install into a stud – Use only the screw provided, do not use the plastic screw. Determine locations and pre-drill a 1/16" pilot hole prior to installing screw. See detailed installation instructions.

#### 3. METHOD #3 – MOUNTING TO CERAMIC TILE

If installing into ceramic tile, the plastic screw provided cannot be utilized.

\*Inquire at the retailer where you purchased your accessories for standard masonry anchors and screws.

#### WARNING

Before attempting to drill through ceramic tile, the following must be done:

- Using a center punch, very lightly and carefully tap the spot where you wish to drill to break the shiny glass portion of the tile.
- Once this is done you can safely drill through the tile with a standard masonry drill bit and install standard masonry anchor (not provided).

#### Step 2: INSTALLATION

- Release set screw at the side of product to obtain mounting bracket. (FIGURE 2)
- Determine the location where you wish to install your accessory.
- Place mounting bracket at the desire location and mark hole. (FIGURE 3)
- Install plastic screw at each pencil mark made. (FIGURE 4)
- Align brackets with installed plastic screw and secure with screws provided. (FIGURE 5)
- Install post over bracket and secure with set screw. (FIGURE 6)
- Assemble the bar between the 2 posts and position over wall brackets, screw the posts with the screws provided. (FIGURE 7)