

Model: S33AS332110-G2



**18 GA Undermount Apron Front Kitchen Sink  
INSTALLATION INSTRUCTIONS**

**General Recommendations:**

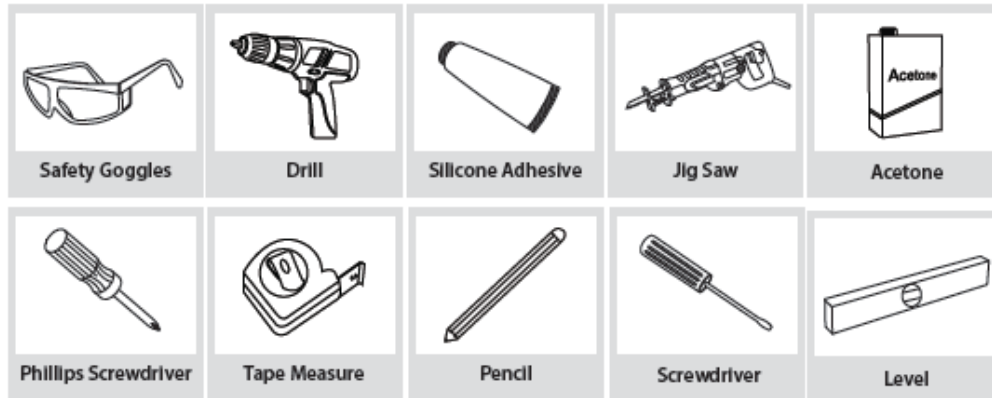
Read installation and maintenance instructions thoroughly before installing sink.

Be sure to use proper tools and always wear proper personal safety accessories for your protection.

**Prior to Installation:**

- Inspect the sink prior to installation to make sure the sink has not been damaged during shipping.
- Use the cut-out template provided.
- Additional floor and wall preparation may be required to avoid damaging the product.
- Be sure to purchase the correct cabinet for your sink. Farmhouse/Apron base cabinets should be 3" larger than the actual size of the sink.
- ***Not recommended to be installed with laminate countertop.***

**Tools and Material Needed for Installation:**



**NOTE:** Specialized tools may be necessary to install Stainless Steel Undermount Sinks with countertop materials other than wood, marble, or granite.

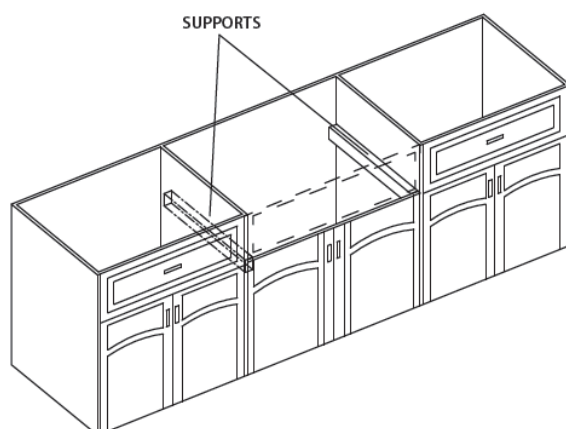
**Model: S33AS332110-G2**

### **1. Measure & Build Supports**

- Measure the actual height of apron.
- Build supports on inside of cabinet based on sink measurements.

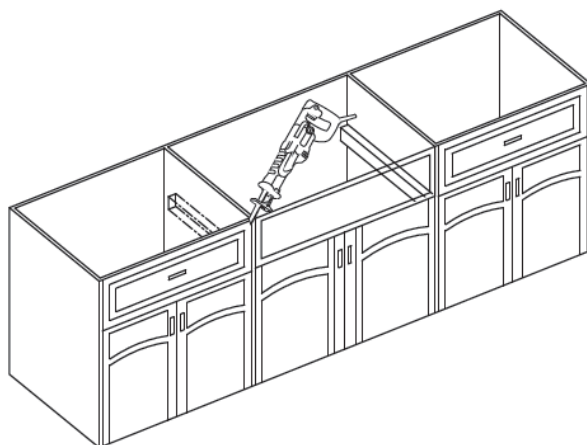
**Installer Tip:** Support Options

- 1-1/4" Angle Irons
- (2) 2"x 4'
- 3/4" Plywood



### **2. Cut Cabinet Front**

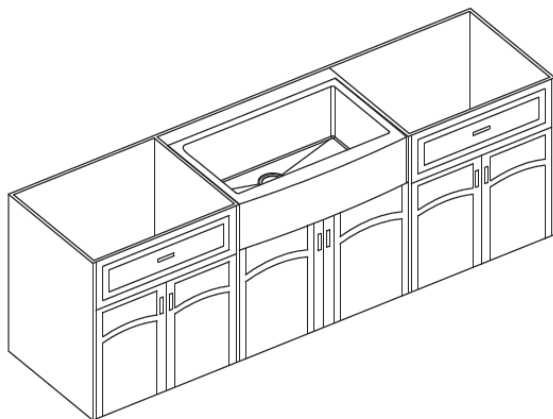
- Measure height of apron front. Add 1/16" to the dimension when you mark base cabinet front cutout. Use jigsaw to cut.



**Model: S33AS332110-G2**

### **3. Install Sink**

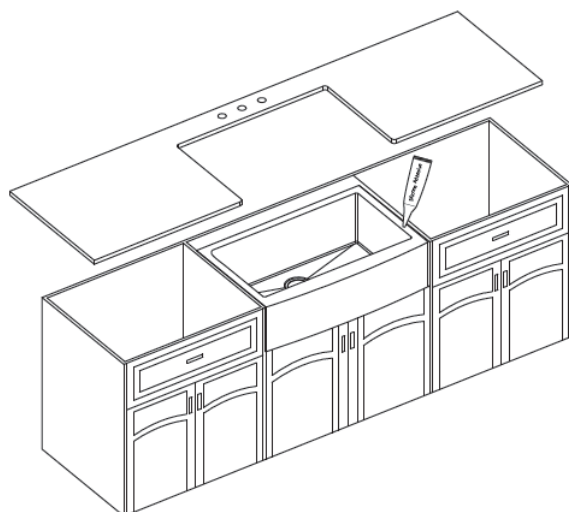
- Place sink in opening. The weight of sink should be sustained by the built supports.
- Make sure sink is leveled from front to back and side to side.
- Uses silicone to fill in gaps where necessary.



### **4. Cut Countertop**

- Use a bead of silicone (or preferred adhesive) around the rim of the sink. Check the alignment of the sink to the cutout in the countertop.
- Place countertop cutout hole over sink and press firmly.

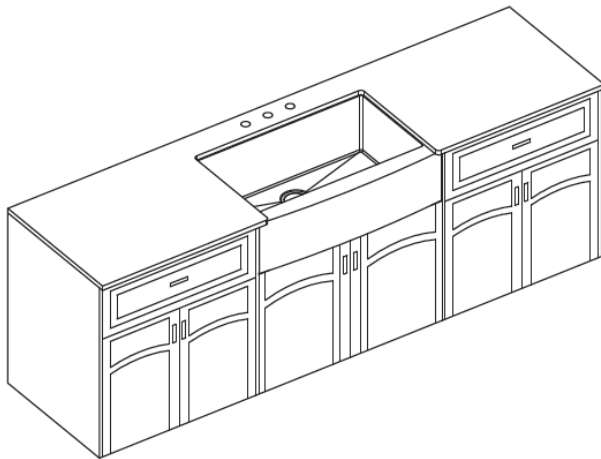
**Installer Tip:** Use acetone or denatured alcohol to remove any excess sealant.



**Model: S33AS332110-G2**

### **5. Installing Plumbing Fixtures**

- Connect drain, trap to drain and water supply connections to the faucet according to manufacturer's instruction.
- Run water into sink and check for leaks.





## **WARRANTY**

Stream33 Products LLC (Stream33) warrants to the ORIGINAL CONSUMER PURCHASER that its Stainless Steel Sinks shall be free from defects in material and workmanship under normal use for the LIFETIME of the product. This warranty cannot be transferred - it is extended only to the original Purchaser or First User of the Product. By accepting and keeping this Product you agree to all of the warranty terms and limitations of liability described below.

Stream33's obligations under the warranty set forth above shall be to replace any Stream33 Stainless Steel Sink which is defective.

## **WHAT IS NOT COVERED?**

The warranty above does not cover and Stream33 is not liable for, (i) installation, (ii) any labor charges or (iii) products which have been damaged as a result of any accident, misuse, abuse, neglect, improper installation or maintenance, the use of abrasive or organic solvent cleaners, modification, failure to use the Stainless Steel Sink in accordance with instructions provided by Stream33.

## **HOW TO OBTAIN WARRANTY SERVICE**

Contact our warranty department at 740-314-1277 to report the defect. Return failed product with proof of purchase, your name, and address within 30 days of failure to:

Stream33 Products LLC  
350 Courtney Road  
Sebring, Ohio 44672 USA

## **LIMITATION OF LIABILITY**

Stream33's liability on any claim of any kind, including, without limitation, warranty, negligence and/or breach of contract, shall in no case exceed the purchase price paid by the Customer. IN NO EVENT SHALL STREAM33 BE LIABLE FOR ANY SPECIAL, INCIDENTAL, CONSEQUENTIAL (INCLUDING, WITHOUT LIMITATION, DAMAGE TO PROPERTY) OR PUNITIVE DAMAGES, DAMAGES IN THE NATURE OF PENALTIES OR SIMILAR OR RELATED DAMAGES OF ANY KIND.

## **DISCLAIMER OF WARRANTIES**

STREAM33 EXPRESSLY DISCLAIMS ALL WARRANTIES, EXCEPT AS EXPLICITLY STATED HEREIN, TO THE FULLEST EXTENT PERMITTED BY LAW, WHETHER WRITTEN, ORAL, EXPRESS OR IMPLIED, INCLUDING ANY WARRANTY OF PERFORMANCE, MERCHANTABILITY, FITNESS FOR A PARTICULAR PURPOSE, AND NONINFRINGEMENT. THIS DISCLAIMER INCLUDES ANY ORAL WARRANTIES OR REPRESENTATIONS MADE OR IMPLIED BY ANY AGENT, EMPLOYEE, SUBCONTRACTOR, MANAGER, DIRECTOR AND/OR REPRESENTATIVE OF STREAM33.