

Model: S33AS332210



**18 GA Undermount Apron Front Kitchen Sink
INSTALLATION INSTRUCTIONS**

General Recommendations:

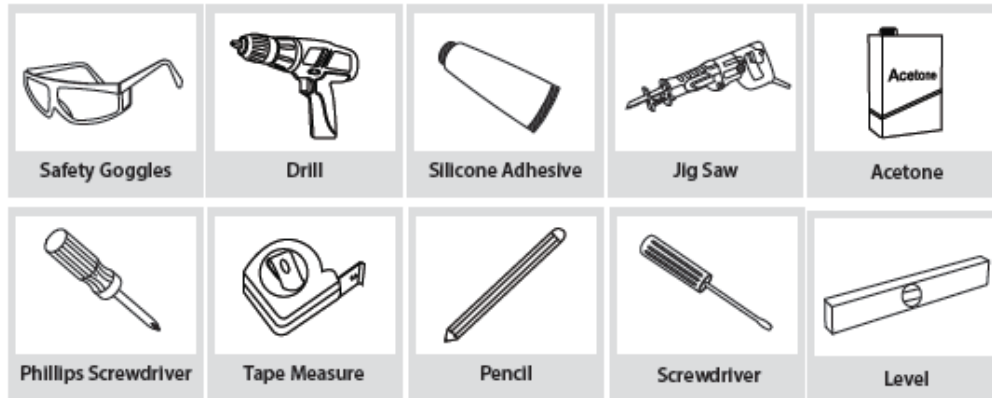
Read installation and maintenance instructions thoroughly before installing sink.

Be sure to use proper tools and always wear proper personal safety accessories for your protection.

Prior to Installation:

- Inspect the sink prior to installation to make sure the sink has not been damaged during shipping.
- Use the cut-out template provided.
- Additional floor and wall preparation may be required to avoid damaging the product.
- Be sure to purchase the correct cabinet for your sink. Farmhouse/Apron base cabinets should be 3" larger than the actual size of the sink.
- ***Not recommended to be installed with laminate countertop.***

Tools and Material Needed for Installation:



NOTE: Specialized tools may be necessary to install Stainless Steel Undermount Sinks with countertop materials other than wood, marble, or granite.

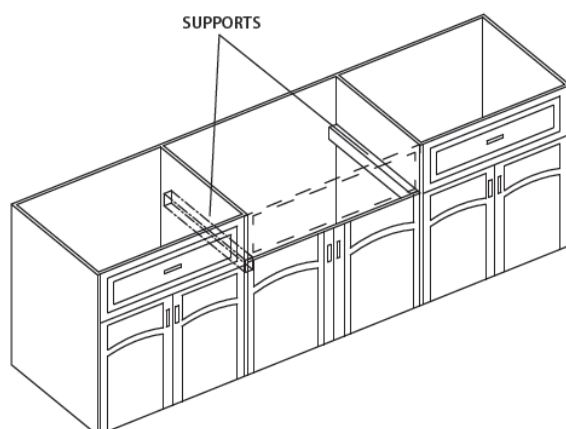
Model: S33AS332210

1. Measure & Build Supports

- Measure the actual height of apron.
- Build supports on inside of cabinet based on sink measurements.

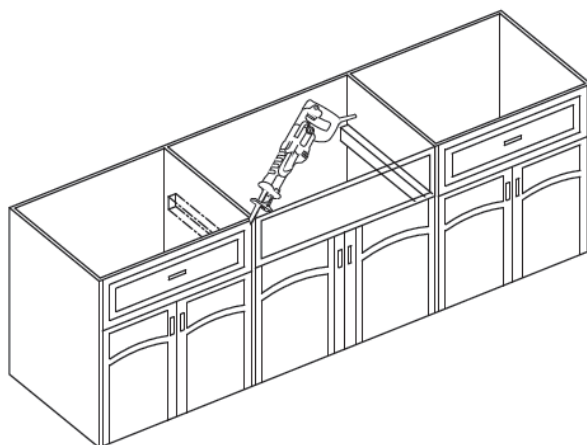
Installer Tip: Support Options

- 1-1/4" Angle Irons
- (2) 2"x 4'
- 3/4" Plywood



2. Cut Cabinet Front

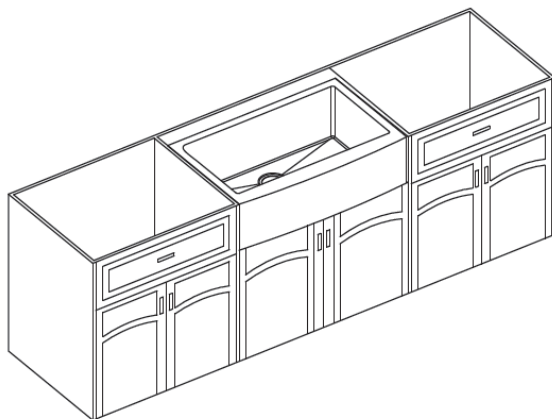
- Measure height of apron front. Add 1/16" to the dimension when you mark base cabinet front cutout. Use jigsaw to cut.



Model: S33AS332210

3. Install Sink

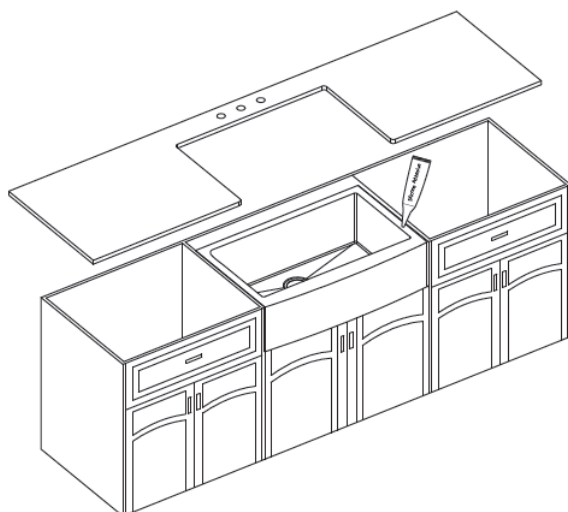
- Place sink in opening. The weight of sink should be sustained by the built supports.
- Make sure sink is leveled from front to back and side to side.
- Uses silicone to fill in gaps where necessary.



4. Cut Countertop

- Use a bead of silicone (or preferred adhesive) around the rim of the sink. Check the alignment of the sink to the cutout in the countertop.
- Place countertop cutout hole over sink and press firmly.

Installer Tip: Use acetone or denatured alcohol to remove any excess sealant.



Model: S33AS332210

5. Installing Plumbing Fixtures

- Connect drain, trap to drain and water supply connections to the faucet according to manufacturer's instruction.
- Run water into sink and check for leaks.

