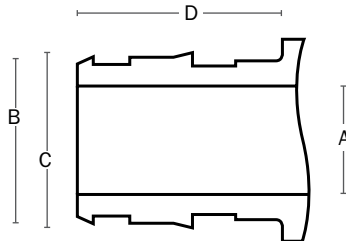




Model	ID	Size
S33412PPCEMPTEE3-PEXA	.3517631	3/4" Inlet, (3) 1/2" Outlets
S33412PPCEMPTEE4-PEXA	.3517634	3/4" Inlet, (4) 1/2" Outlets
S33412PPCEMPTEE6-PEXA	.3517637	3/4" Inlet, (6) 1/2" Outlets



Size	Inside Dia. (A)	Upper Barb Dia.(B)	Lower Barb Dia. (C)	End Length (D)
1/2"	0.378" min	0.618" min 0.61" max	0.579" min 0.571" max	0.689" min 0.729" max
3/4"	0.595" min	0.874" min 0.866" max	0.795" min 0.787" max	0.925" min 0.965" max
1"	0.795" min	1.11" min 1.102" max	1.032" min 1.024" max	1.161" min 1.201" max

## SUBMITTAL SHEET

### PROJECT INFORMATION

Job Name:

Location:

Engineer:

Contractor:

P.O. Number:

Representative:

### MODELS

- ☐ S33412PPCEMPTEE3-PEXA      ☐ S33412PPCEMPTEE6-PEXA  
☐ S33412PPCEMPTEE4-PEXA

### FEATURES

- PPSU
- Manufactured to ASTM Standard F1960

### OPERATING SPECIFICATIONS

- Can be used with PEX tubing manufactured to ASTM Standard F876
- Max pressure/temperature: 100 PSI at 180°F

### APPROVALS

- NSF 14
- UPC
- Lead-free

### INSTALLATION GUIDE

PPSU fittings should never be exposed to pipe dopes, glues or sealing adhesives, lubricants, or any other solvent. PPSU fittings should be stored and installed away from direct sunlight and other UV exposure. Complete installation instructions for PEX plumbing systems can be found at [stream33.com](http://stream33.com).

### RECOMMENDED ACCESSORIES

Model	ID	Description
S3312ER-PEXA	.3517626	1/2" Expansion Ring
S3334ER-PEXA	.3517627	3/4" Expansion Ring
S331ER-PEXA	.3517628	1" Expansion Ring