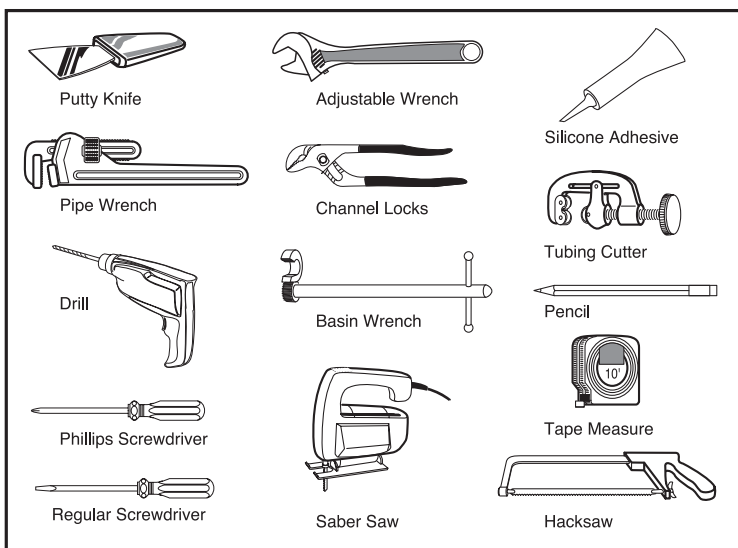




UNDERMOUNT LAVATORY INSTALLATION INSTRUCTIONS

Thank you for selecting our products. To help ensure that the installation process will proceed smoothly, please read these instructions carefully before you begin. Also, review the recommended tools and materials list; carefully unpack and examine your new plumbing fixture.

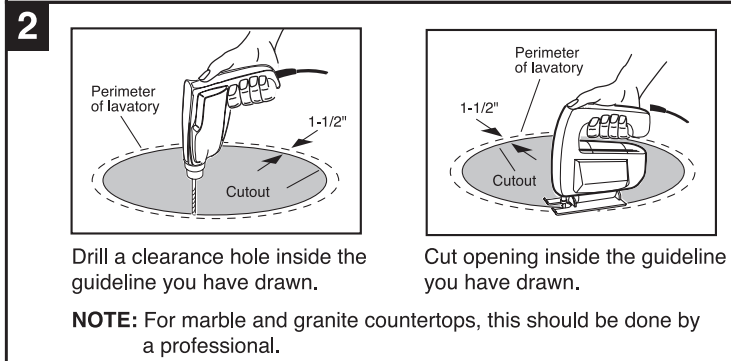
RECOMMENDED TOOLS & MATERIALS



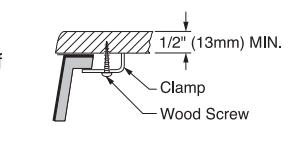
CAUTION: Risk of personal injury. Handle with care. Product can break, chip, or cause injury if handled carelessly. Get help lifting the lavatory.
NOTICE: Risk of product damage. Do not overtighten connections. Overtightening may break or chip the lavatory.
IMPORTANT! You may require different, more specialized tools to install this lavatory. Do not use adhesives or adhesive sealants with this product. Only use silicone sealant.

INSTALLATION INSTRUCTIONS

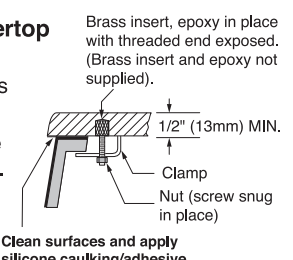
1 Sink should be installed under a 22" minimum depth countertop. If making a cutout is necessary, locate the position of the lavatory. Provide proper clearance under the countertop for the faucet supply lines, drain assembly and the structural parts of the cabinet.
a. Place the template ring on the countertop in the desired location for the lavatory.
b. Draw four arrows lightly on the countertop, don't move the template. Draw around the inside of the ring. **This is the guideline for the area to be cut out.**
NOTE: If replacing an existing lavatory be certain to shut off water supply before removing old lavatory.



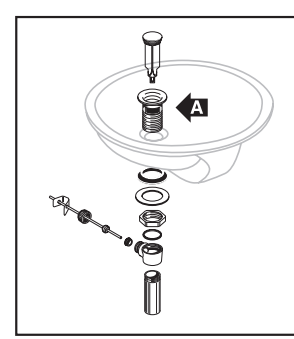
3 For Wood Countertop
Mark and drill holes according to specs of mounting hardware (not included). Waterproof any exposed areas of wood.
Caution: Ensure adequate countertop thickness prior to drilling holes.



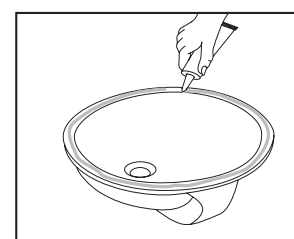
4 For Marble or Solid Surface Countertop
To protect countertop, place it on a foam padding and drill holes according to specs of mounting hardware (not included). Clean countertop surface and sink surface where silicone caulking/adhesive is applied.
Caution: Ensure adequate countertop thickness prior to drilling holes.



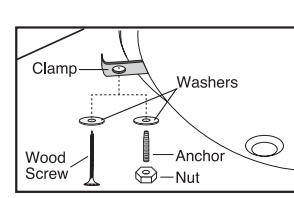
5 Mount the drain assembly (not included) on the lavatory following faucet manufacturer's instructions. Be certain to apply a bead of sealing putty on the underside of the drain (Part "A") in order to ensure a watertight seal between the lavatory and drain. Remove excess putty after installing drain on sink.



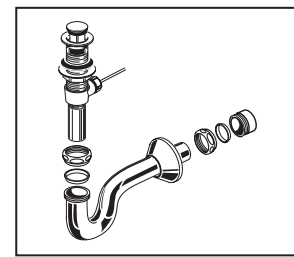
6 After checking fit and alignment of sink to cutout, apply a bead of 100% silicone sealant to rim of sink. Do not use adhesives or adhesive sealants.



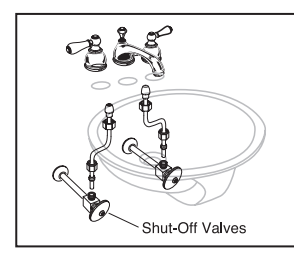
7 Position the lavatory squarely under the cutout and secure the lavatory to the countertop using appropriate mounting hardware (not included). **(See Step 3 and 4) Do not overtighten.**
NOTE: For different thickness countertops, please use appropriate hardware.



8 Install trap (not included) to drain assembly as specified by trap manufacturer's instructions.



9 Install faucet (not included) as specified by faucet manufacturer's instructions.



CAUTION: When cleaning your lavatory, wash it with mild, soapy water, rinse thoroughly with clear water and dry with a soft, dampened sponge or cloth. Avoid detergents, disinfectants, or cleaning products in aerosol cans. NEVER use abrasive scouring powders or abrasive pads on your lavatory. Do not allow cleaners to soak on surfaces, some bathroom chemicals and cosmetics may damage the sink's finish.

Cut countertop inside this ring

Overflow

Template Ring

Perimeter of Lavatory

Left

Right

Back 1-1/2" (38mm)