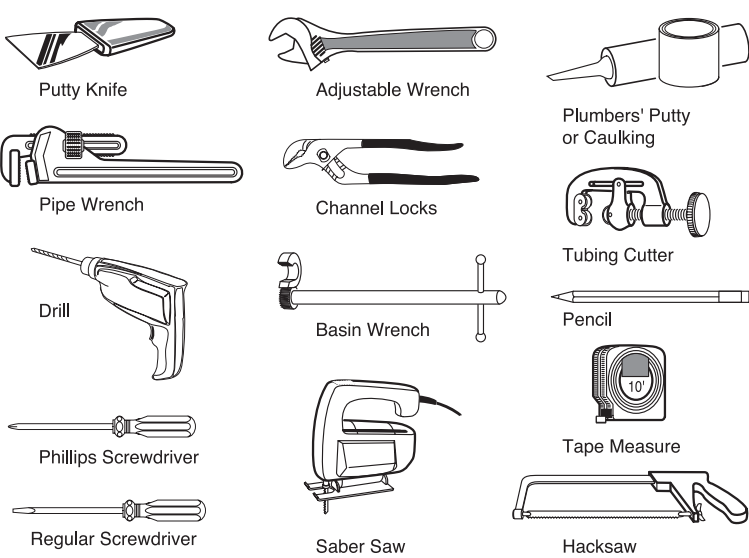




DROP-IN LAVATORY  
INSTALLATION INSTRUCTIONS

Thank you for selecting our products. To help ensure that the installation process will proceed smoothly, please read these instructions carefully before you begin. Also, review the recommended tools and materials list; carefully unpack and examine your new plumbing fixture.

RECOMMENDED TOOLS & MATERIALS



**CAUTION: Risk of personal injury.** Handle with care. Product can break, chip, or cause injury if handled carelessly. Get help lifting the lavatory.

**NOTICE: Risk of product damage.** Do not overtighten connections. Overtightening may break or chip the lavatory.

**IMPORTANT!** You may require different, more specialized tools to install this lavatory. Do not use adhesives or adhesive sealants with this product. Only use silicone sealant.

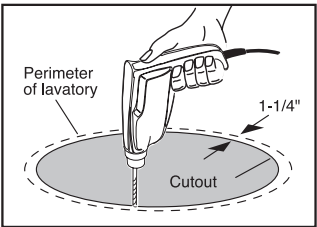
INSTALLATION INSTRUCTIONS

**1** If making a cutout is necessary, locate the position of the lavatory. Provide proper clearance under the countertop for the faucet supply lines, drain assembly and the structural parts of the cabinet.

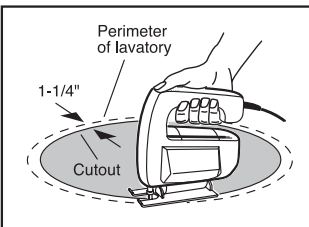
a. Place the template ring on the countertop in the desired location for the lavatory.

b. Draw four arrows lightly on the countertop, don't move the template. Draw around the inside of the ring. **This is the guideline for the area to be cut out.**

**NOTE:**  
If replacing an existing lavatory be certain to shut off water supply before removing old lavatory.



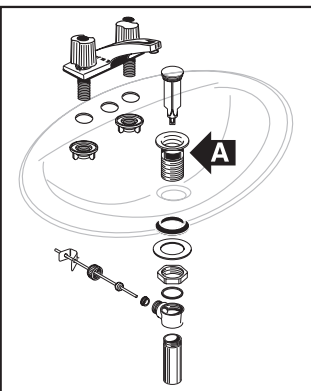
Drill a clearance hole inside the guideline you have drawn.



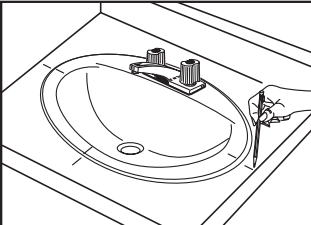
Cut opening inside the guideline you have drawn.

**NOTE:** For marble and granite countertops, this should be done by a professional.

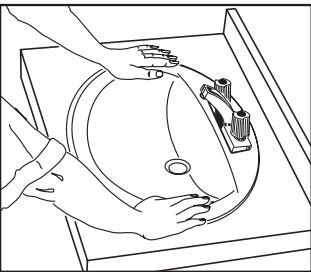
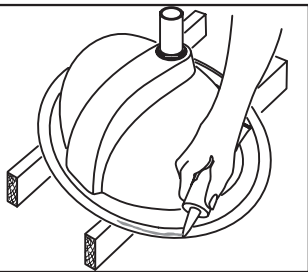
**3** Mount the faucet and drain assembly (not included) on the lavatory following faucet manufacturer's instructions. Be certain to apply a bead of sealing putty on the underside of the drain (Part "A") in order to ensure a watertight seal between the lavatory and drain. Remove excess putty after installing drain on sink.



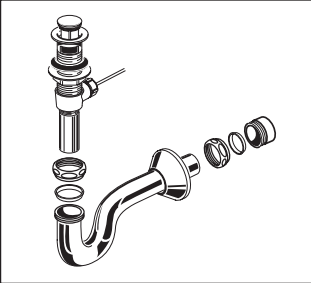
**4** Before applying the sealant, place the lavatory temporarily into the cutout. Check for alignment and clearance. Then mark the lavatory and countertop in several places as a guide for the installation location.



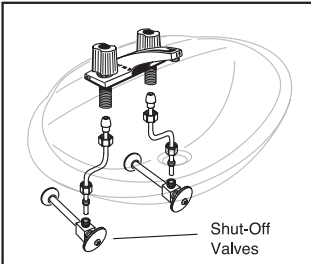
**5** After checking fit and alignment, turn lavatory upside down and apply a generous portion of sealant around the underside of the rim near the edge. Carefully lower lavatory in place, align with marks made earlier, and press down firmly. Allow sealant to set before connecting supplies and drain.



**6** Install trap (not included) to drain assembly as specified by trap manufacturer's instructions.



**7** Install faucet (not included) as specified by faucet manufacturer's instructions.



CARE AND CLEANING

**CAUTION:** When cleaning your lavatory, wash it with mild, soapy water, rinse thoroughly with clear water and dry with a soft, dampened sponge or cloth. Avoid detergents, disinfectants, or cleaning products in aerosol cans. NEVER use abrasive scouring powders or abrasive pads on your lavatory. Do not allow cleaners to soak on surfaces, some bathroom chemicals and cosmetics may damage the sink's finish.

Back

Left

Right

Overflow

Template Ring  
Perimeter  
of Lavatory

Cut countertop  
inside this ring