

16.4" (417mm)

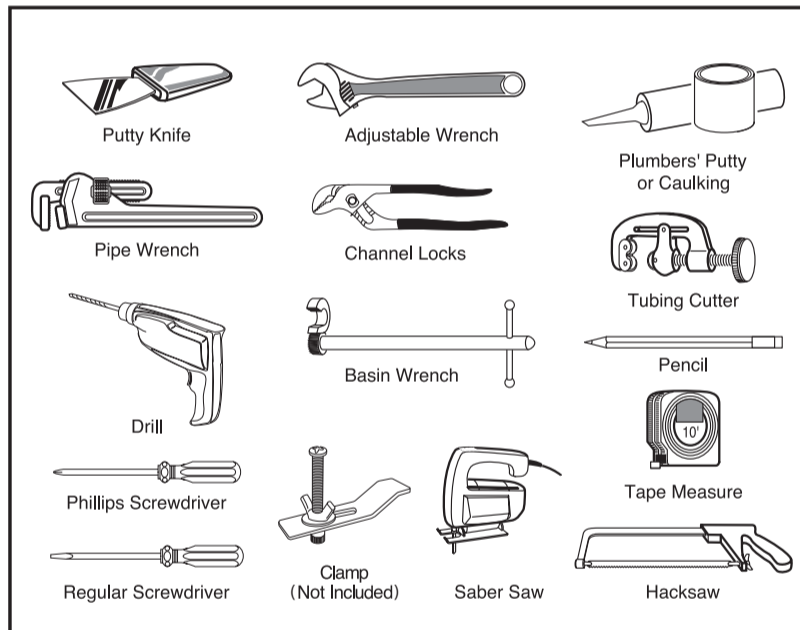
Back

stream33®

Instructions - Rectangular Undermount Lavatory  
Instructivo de Instalación Lavabo bajo cubierta

Thank you for selecting our products. To help ensure that the installation process will proceed smoothly, please read these instructions carefully before you begin. Also, review the recommended tools and materials list; carefully unpack and examine your new plumbing fixture.

RECOMMENDED TOOLS & MATERIALS



**CAUTION: Risk of personal injury.** Handle with care. Product can break, chip, or cause injury if handled carelessly. Get help lifting the lavatory.

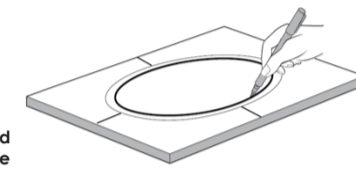
**NOTICE: Risk of product damage.** Do not overtighten connections. Overtightening may break or chip the lavatory.

**IMPORTANT!** You may require different, more specialized tools to install this lavatory. Do not use adhesives or adhesive sealants with this product. Only use silicone sealant.

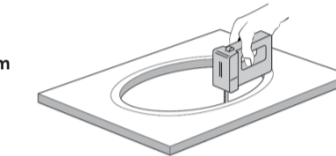
INSTALLATION INSTRUCTIONS

- 1.- Installation Details. Detalles de Instalación.
- 2.- Preparation of the surface to install the sink. Preparación de la superficie para instalar el Lavabo

Take the template and cut out the area according to your lavatory and center the template on the plate, using the axes marked on the template.



Mark the area to be used for your Lavatory, make sure to leave room for the mixer tap, and drill holes in the plate.



Drill out the marked areas. Perfore las áreas marcadas.

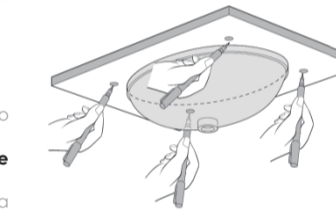
**NOTE: Make sure the hoses can freely pass through the Lavatory feed hole for faucet installation.**  
NOTA: Asegúrese que las mangueras puedan pasar libremente por la perforación de alimentación del lavabo para la instalación de la llave.

- 3.- Lavatory Installation. Instalación del Lavabo.

Place the sink in the installation position and align with the drain hole. Coloque el lavabo en la posición de instalación y alínelo con el orificio del desagüe.

Using a pencil mark the location of the Clamps and prepare for the installation of the Clamps. Usando un lápiz marque la ubicación de los Clamps y prepare para la instalación de los mismos.

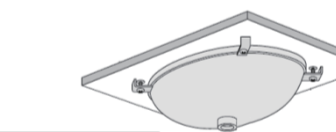
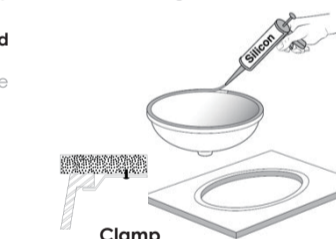
Put silicone on the edge of the sink, put it in the installation position and install the Clamps. Coloque silicona en el borde del lavabo póngalo en la posición de instalación e instale los Clamps.



- 4.- Final step. Detalles Finales.

Install the rest of the drainpipe and mixer tap according to the manufacturer's specifications. Instale el resto de la tubería del desagüe y la llave mezcladora de acuerdo a las especificaciones del fabricante.

Test the tubing to ensure there are no leaks. Realice una prueba en la tubería para asegurar que no existen fugas.



Right

Left

10.6" (268mm)

Template Ring

Overflow

Cut countertop inside this ring

CARE AND CLEANING

**CAUTION:** When cleaning your lavatory, wash it with mild, soapy water, rinse thoroughly with clear water and dry with a soft, dampened sponge or cloth. Avoid detergents, disinfectants, or cleaning products in aerosol cans. NEVER use abrasive scouring powders or abrasive pads on your lavatory. Do not allow cleaners to soak on surfaces, some bathroom chemicals and cosmetics may damage the sink's finish.