



## S3312PEXBBV .3470539

SIZE (A)	DIMENSIONS		
	B	C	D
1/2"	2.46"	1.57"	3.15"

## S3334PEXBBV .3470540

SIZE (A)	DIMENSIONS		
	B	C	D
3/4"	2.61"	1.67"	3.15"

## S331PEXBBV .3470541

SIZE (A)	DIMENSIONS		
	B	C	D
1"	3.26"	1.79"	3.62"

## SUBMITTAL SHEET

### PROJECT INFORMATION

Job Name:

Location:

Engineer:

Contractor:

P.O. Number:

Representative:

### MODELS

☐ S3312PEXBBV

☐ S331PEXBBV

☐ S3334PEXBBV

### DESCRIPTION

Stream33® PEX B Full Port Ball Valve quarter-turn handle easily and quickly turns flow to the supply on and off, making it simple to perform repairs or maintenance.

### FEATURES

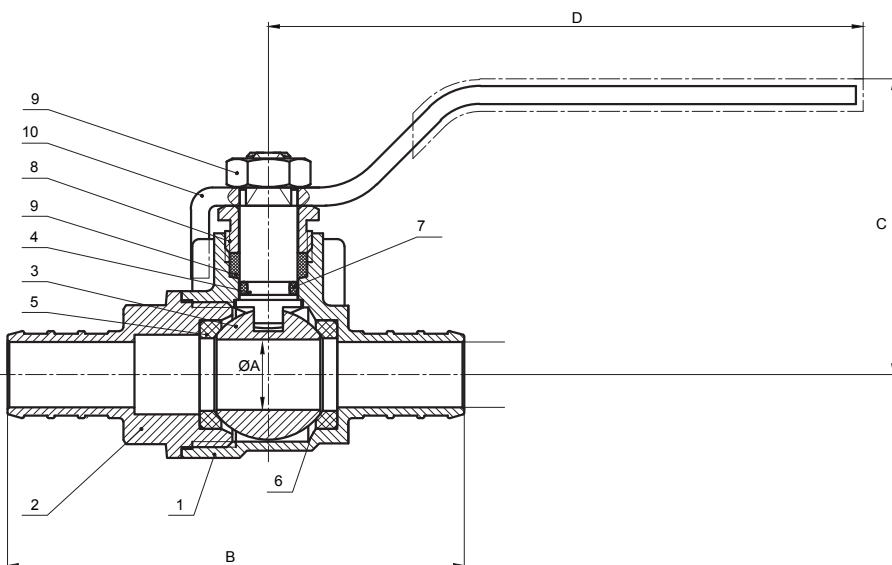
- PEX B
- High Performance ECO Brass Body
- Lead Free

### OPERATING SPECIFICATIONS

- Temperature rating: -20° - 250° F
- Pressure rating: 400 PSI maximum

### APPROVALS

- cUPC
- NSF 61/372
- CSA
- UL
- FM



	MATERIAL SPECIFICATIONS	
1	Body	C69300
2	Caps	C69300
3	Ball	C69300
4	Stem	C48600
5	Ball Seat	PTFE
6	Gasket	HH040P
7	Thrust Washer	EPDM
8	Gland	C3770-T
9	Gland Gasket	PTFE
10	Handle	Q235+PVC