



## S3312TGBV .3470418

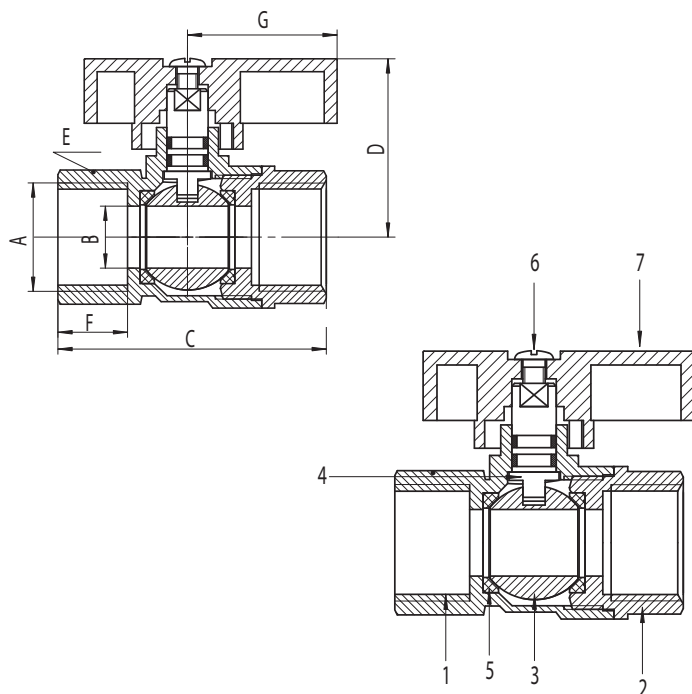
SIZE (A)	DIMENSIONS					
	B	C	D	E	F	G
1/2" - 14NPT	.47"	2.05"	1.32"	1.02"	.55"	1.14"

## S3334TGBV .3470421

SIZE (A)	DIMENSIONS					
	B	C	D	E	F	G
3/4" - 14NPT	.59"	2.44"	1.5"	1.22"	.59"	1.14"

## S331TGBV .3470422

SIZE (A)	DIMENSIONS					
	B	C	D	E	F	G
1" - 11.5NPT	.96"	3.11"	1.86"	1.49"	.83"	1.14"



## SUBMITTAL SHEET

### PROJECT INFORMATION

Job Name:

Location:

Engineer:

Contractor:

P.O. Number:

Representative:

### MODELS

☐ S3312TGBV

☐ S331TGBV

☐ S3334TGBV

### DESCRIPTION

Stream33® Threaded Gas Ball Valve quarter turn handle allows the control of gas to a plumbing fixture. The quarter-turn handle easily and quickly turns flow to the end fixture on and off, making it simple to perform repairs or maintenance. PTFE seat rings offer a longer life and consistent performance.

### FEATURES

- FNPT x FNPT
- Cast Brass Body
- Quarter Turn

### OPERATING SPECIFICATIONS

- Temperature rating: -30° - 200° F
- Pressure rating: 600 PSI (5 PSIG) maximum

### APPROVALS

- CSA

	MATERIAL SPECIFICATIONS	
1	Body	HPb59-1
2	Caps	HPb59-1
3	Ball	HPb59-1
4	Stem	HPb59-1
5	Ball Seat	PTFE
6	Hex Screw	Q235A
7	Handle	Steel